

HOLIDAY HOMEWORK

Class: IX

Session: 2025–2026



**D.A.V. PUBLIC SCHOOL
PROFESSOR COLONY, YAMUNA NAGAR**

Subjects Included:

- - English
- - Hindi
- - Mathematics
- - Science
- - Social Science
- - Artificial Intelligence

"Learning Never Takes a Holiday!"

Make your holidays productive and fun with engaging activities.

Holiday Homework (9th Class)

HOLIDAY ASSESSMENT **English**

Summer Vacation Homework'

Theme: "Discover, Describe, Design"

1. **Comic Strip Creation Or (Newspaper Or Magazine.**
Task: Convert a chapter or poem (e.g., The Fun They Had or The Road Not Taken) into a 6-panel comic strip.
Or Magazine (including Story, jokes, facts, G.K Qs, Riddles etc) or Newspaper (News, Weather report, Riddles etc)
Skill focus: Visual storytelling, interpretation
2. **Dear Diary, I'm a..." Project**
Task: Write diary entries from the perspective of a dog, tree, mobile phone, or robot (Any 2)
Skill focus: Creative writing, empathy
3. **Vocabulary Journal – "Word a Day"**
Task: Learn one new word each day, (from Literature) use it in a sentence from current events/literature, and write one synonym, antonym, and a doodle.
Skill focus: Vocabulary building, retention
4. **Dialogue Remix**
Task: Rewrite a dialogue from any chapter in modern-day slang or as a text message conversation on Phone. (eg Margie and Tommy's Conversation)
Skill focus: Style, tone, modernization of classic content
5. **GRAMMAR - Worksheets on Modals and Tenses- 100 Qs (PDFs shared in WhatsApp groups) And 25 discussed in Class**
6. **Prepare PT-I Syllabus**
Ch1. The Fun they Had
Poem 1- The Road Not Taken and Poem 2. Wind
Ch.1.The Lost Child
Ch2. The Adventure of Toto
Gap filling-Tenses, Modals
7. **Solve the worksheets PT-I Syllabus) on Assignment or designer sheets**

Holiday Homework (9th Class)

A. Ch. 1 – The Fun They Had (Isaac Asimov)

MCQs/One-word:

1. What subject was Tommy's book about?
 - a) Geography
 - b) History
 - c) Mathematics
 - d) Science
2. Who is the author of The Fun They Had? (One word)
3. What did Margie write about in her diary on 17 May 2157? (One word)
4. What is a "telebook"?
 - a) A printed book
 - b) A digital book
 - c) A holographic book
 - d) An audio book

Short Answer (30–40 words):

5. How did Tommy describe the old kind of schools?
6. What was Margie's opinion about her mechanical teacher?

Long Answer (100–120 words):

- 7. Compare and contrast the futuristic education in the story with the traditional schooling system. Which do you think is better and why?**

B. Poem – The Road Not Taken (Robert Frost)

MCQs/One-word:

1. Who is the poet of The Road Not Taken? (One word)
2. What does the road symbolize in the poem?
 - a) Forest path
 - b) Career choices
 - c) Actual roads
 - d) Travel destination
3. "And that has made all the _____." (Fill in the blank)
4. The poet chose the road:
 - a) Frequently used
 - b) Equally worn
 - c) Less travelled
 - d) Under construction

Short Answer:

5. What dilemma does the poet face in the poem?
6. What is the central message of the poem?

Long Answer:

- 7. Do you agree with the poet's decision of choosing the less travelled road? Explain with reference to your life or choices.**

C. Poem – Wind (Subramania Bharati)

MCQs/One-word:

- 1. What does the wind symbolize in the poem? (One word)**

Holiday Homework (9th Class)

2. Who is the poet of the poem "Wind"? (One word)
3. The wind is described as:
 - a) A friend
 - b) A destroyer
 - c) Both
 - d) None
4. Which of the following does the wind not destroy?
 - a) Crumbling houses
 - b) Strong doors
 - c) Weak fires
 - d) Books on the shelf

Short Answer:

5. What does the poet advise us to do in order to withstand the wind?
6. How does the wind test people?

Long Answer:

7. Explain how the poem uses the wind as a metaphor for life's challenges. What qualities does the poet want us to develop?

D. Ch. 1 – The Lost Child (Mulk Raj Anand)

MCQs/One-word:

1. Who is the author of The Lost Child? (One word)
2. What was the child attracted to at the fair first?
 - a) Toys
 - b) Sweets
 - c) Garland
 - d) Snake charmer
3. What did the child want after the sweetmeat? (One word)
4. The final desire of the child was to:
 - a) Eat sweets
 - b) Buy a toy
 - c) See the magician
 - d) Go back to his parents

Short Answer:

5. Why did the child refuse all the things he had desired earlier?
6. What do you learn about the relationship between the child and his parents?

Long Answer:

7. Discuss the theme of parental love and child psychology depicted in The Lost Child.

E. Ch. 2 – The Adventure of Toto (Ruskin Bond)

MCQs/One-word:

1. Who is the author of The Adventure of Toto? (One word)
2. How much did Grandfather pay to buy Toto from the tonga-driver?
 - a) Five rupees
 - b) Ten rupees
 - c) Fifteen rupees
 - d) Twenty rupees

Holiday Homework (9th Class)

3. Where was Toto kept secretly before being introduced to Grandmother?
(One word)
4. How did Toto behave in the bathroom?
 - a) Broke the tub
 - b) Took a bath
 - c) Ate soap
 - d) Burned himself

Short Answer:

5. Describe Toto's mischief in the dining room.
6. Why was Grandfather forced to return Toto?

Long Answer:

7. How does Ruskin Bond use humor to portray the mischievous nature of Toto?

F. Grammar – Gap Filling (Tenses, Modals)

MCQs/One-word:

1. He _____ (leave) for school before his mother returned.
 - a) leaves
 - b) had left
 - c) will leave
 - d) is leaving
2. Choose the correct modal: "You _____ respect your elders."
 - a) might
 - b) should
 - c) would
 - d) can
3. He _____ (be) sleeping when I called him last night. (One word)
4. If it rains, we _____ stay indoors.
 - a) must
 - b) will
 - c) should
 - d) can

Short Answer:

5. Fill in the blanks with suitable modals:
 - You _____ (not/steal).
 - We _____ (help) the needy.
6. Fill in the blanks using correct tense forms:
 - She _____ (write) a letter when I entered.
 - The children _____ (play) in the garden yesterday.

Long Answer:

7. You are the class monitor. Write a paragraph on "Discipline in School" using at least five modals and varied tenses.

Holiday Homework (9th Class)

कक्षा नवमी *विषय-हिंदी*

छुट्टियों में जब आप कहीं घूमने जाएं तो उस यात्रा का सविस्तर वर्णन *पाठ 'एवरेस्ट: मेरी शिखर यात्रा'* के संदर्भ में परियोजना कार्य के रूप में करें।

सहायक बिंदु - आपने कहां से यात्रा शुरू की, कहां जाना है, वहां तक की दूरी किलोमीटर में, जाने का साधन, विभिन्न पड़ाव, प्रसिद्ध स्थान-उनका ऐतिहासिक व धार्मिक महत्व, निश्चित स्थान की भौगोलिक परिस्थितियां और पर्यावरण। अपने परिवार के फोटो के साथ उन स्थानों की खूबसूरत यादों का परियोजना कार्य के रूप में सजीव चित्रण करें।

संबंधित विषय- हिंदी, सामाजिक विज्ञान, विज्ञान और गणित *अथवा*

संघन पुस्तक में से *गित्तू* कहा नी पढ़ें और उससे प्रेरणा लेकर छुट्टियों में किसी एक पालतू पशु या पक्षी की सेवा और स्मृतियों को उनके जीवन चक्र की जानकारी देते हुए पीपीटी या परियोजना कार्य के रूप में प्रस्तुत करें।

संबंधित विषय- हिंदी, विज्ञान, सामान्य ज्ञान और कंप्यूटर

कार्य प्रपत्र-1

1. निम्नलिखित गद्यांश को ध्यानपूर्वक पढ़कर इसके आधार पर उपयुक्त उत्तर वाले विकल्प चुनकर लिखिए।

भारत के ऋषि मुनि जानते थे कि प्रकृति जीवन का स्रोत है और पर्यावरण के समृद्ध और स्वस्थ होने से ही हमारा जीवन भी समृद्ध और सुखी होता है। वे प्रकृति की दैवी शक्ति के रूप में उपासना करते थे और उसे 'परमेश्वरी' भी कहते थे। उन्होंने पर्यावरण पर बहुत गहरा चिंतन किया। जो कुछ पर्यावरण के लिए हानिकारक था, उसे आसुरी प्रवृत्ति कहा और जो हितकर था, उसे दैवी प्रवृत्ति माना। भारत के पुराने ग्रंथों में वृक्षों और वनों का चित्रण पृथ्वी के रक्षक वस्त्रों के रूप में किया गया है। उनको संतान की तरह पाला जाता था और हरे-भरे पेड़ों को अपने किसी स्वार्थ के लिए काटना पाप कहा जाता था। अनावश्यक रूप से पेड़ों को काटने पर दंड का विधान भी था। मनुष्य यह समझता है कि समस्त प्राकृतिक संपदा पर केवल उसी का आधिपत्य है। हम जैसा चाहें, इसका उपयोग करें। इसी भोगवादी प्रवृत्ति के कारण मानव ने इसका इस हद तक शोषण कर लिया है कि अब उसका अस्तित्व ही संकट में पड़ गया है। वैज्ञानिक बार-बार चेतावनी दे रहे हैं कि प्रकृति और पर्यावरण की रक्षा करो, अन्यथा मानव जाति नहीं बच पाएगी। भारतीय संस्कृति में वृक्षों की रक्षा के महत्व को 'तुलसी' और 'पीपल' के उदाहरण से समझा जा सकता है। इन जीवन उपयोगी वृक्षों की देवी-देवता के समान ही पूजा की जाती है। पर्यावरण की दृष्टि से वृक्ष को परम रक्षक और मित्र बताया गया है। यह हमें अमृत प्रदान करता है, दूषित वायु को स्वयं ग्रहण करके हमें प्राण वायु देता है, मरुस्थल का नियंत्रक होता है, नदियों की बाढ़ को रोकता है और जलवायु को स्वच्छ बनाता है। इसलिए हमें वृक्ष मित्र होकर जीवन-यापन करना चाहिए।

i). मानव का जीवन समृद्ध हो सकता है —

- | | |
|-------------------------------|---|
| क) देवी शक्ति की उपासना से | ख) ऋषि मुनियों के ज्ञान से |
| ग) आसुरी शक्तियों के विनाश से | घ) पर्यावरण के समृद्ध और स्वस्थ होने से |

ii). पृथ्वी के रक्षक वस्त्र हैं —

- | | |
|------------------------------|-----------------------------|
| क) वृक्ष और वन | ख) देवी देवताओं का आशीर्वाद |
| ग) आकाश में उड़ने वाले पक्षी | घ) प्रचुर धन-संपदा |

Holiday Homework (9th Class)

iii). पर्यावरण -प्रदूषण बढ़ता जा रहा है --

क) भूस्खलन से

ख) पेड़ों को काटने से

ग) बादलों के फटने से

घ) राक्षसी प्रवृत्तियाँ बढ़ने से

iv). पर्यावरण की दृष्टि से वृक्ष को परम रक्षक और मित्र क्यों बताया गया है?

v). वैज्ञानिक बार-बार क्या चेतावनी दे रहे हैं?

2. अनुस्वार और अनुनासिक में उदाहरण सहित अंतर स्पष्ट करें।

3. उचित स्थान पर विराम चिन्ह लगाएं -

i) नया साल मंगलमय हो

ii) आप आइए बैठिए

iii) यदि मेहनत करते तो यूँ न पछताते

iv) आप यहाँ से कब जाएंगे

4. उपसर्ग तथा मूल शब्द अलग करें --

अधमरा , विनाश , चिरकाल , सहपाठी

5. प्रत्यय तथा मूल शब्द अलग करें --

कठिनतर , दयावान , सेठानी , अपनापन

6. वाक्य में प्रयुक्त होने वाले शब्द क्या कहलाते हैं?

7. कबूतर, चिड़िया, मोर शब्द है या पद ?

8. अपने छोटे भाई को मीठी वाणी का महत्व बताते हुए पत्र लिखें।

कार्य प्रपत्र -2

संवाद लेखन

1. भोजनावकाश के समय अक्सर कोई आपका खाना खा लेता है इस कारण आपको भूखे रहना पड़ता है। आप इस बात की शिकायत अपनी कक्षा अध्यापिका से करते हैं कक्षा अध्यापिका और आपके बीच हुई बातचीत को लगभग 70-80 शब्दों में संवाद रूप में लिखिए।

2. स्कूल विकास कमेटी में आप विद्यार्थियों के प्रतिनिधि के रूप में नियुक्त हैं। आपका नाम रीमा है। कमेटी की बैठक अगले सप्ताह आने वाले नए वर्ष में शामिल की जाने वाली गतिविधियों के बारे में विचार-विमर्श करेगी। आप इस अवसर की तैयारी के लिए स्कूल के विद्यार्थी रोहित से उनके द्वारा शामिल की जा सकने वाली गतिविधियों की सूची मंगवाते करते हुए अपनी बातचीत को संवाद के रूप में लिखिए।

Holiday Homework (9th Class)

कार्य प्रपत्र 3

अनुच्छेद लेखन

o नाटक मंचन के दौरान जब मैं अपना संवाद भूल गया/ गई

संकेत बिंदु

* मेरी मन :स्थिति

* दर्शकों द्वारा उत्साह वर्धन

* सफलतापूर्वक नाटक की समाप्ति

o समाचार पत्र के नियमित पठन का महत्त्व

संकेत बिंदु

* ज्ञान का भंडार

* पढ़ने की आदत का विकास

*जागरूकता

कार्य प्रपत्र 4

प्रश्न 1. दिए गए चित्रों को देखकर लगभग 100 शब्दों में वर्णन कीजिए।

Holiday Homework (9th Class)



MATHS

Revise chapters

- 1. Number system**
- 2. Polynomials**
- 3. Coordinate Geometry**
- 4. Linear equation in two variables.**

Also do all these chapters from ncert exemplar

Do 5 subject enrichment activities of mathematics.

Make a project on comparing Max. and min. temperature variation of the even dates (2,4,6,8.... 30/6/25) in the month of June of your city. Plot them on the graphs.

Holiday Homework (9th Class)

SCIENCE Chemistry CHAPTER 1

SCIENCE PROJECT

Fostering cultural exchange and understanding between states and Union Territories (UTs) in India, with a goal of promoting unity and strength, students are supposed to **Prepare a project on Topic: Ek Bharat Shreshtha Bharat under following headings**

***Art integration**

***Cultural heritage**

***Development in the field of science and technology**

1. **Density of gases change with:**
 - a) temperature and volume
 - b) pressure only
 - c) temperature only
 - d) pressure and temperature
2. **What happens to the volume of the solution when small amount of sugar is dissolved in it?**
 - a) volume will increase
 - b) volume will decrease
 - c) volume first increase then decrease
 - d) no change in volume
3. **Which out of the following does not make sense?**
 - a) Solids have fixed shape and fixed volume.
 - b) Liquids can be compressed easily, but not gases.
 - c) The particles of solids have negligible kinetic energy.
 - d) Property of diffusion is maximum in the gaseous state.
4. **Which of the following is/are application(s) of high compressibility of gases?**
 - a) LPG is used as fuel in homes for cooking food.
 - b) Oxygen cylinders are supplied to hospitals.
 - c) CNG is used as fuel in vehicles.
 - d) All of these.
5. **When a liquid starts boiling, the further heat energy which is supplied –**
 - a) Is lost to the surrounding as such.
 - b) Increase the temperature of liquid.
 - c) Increase the kinetic energy of liquid.
 - d) Is absorbed as latent heat of vaporization by the liquid.

Holiday Homework (9th Class)

6. **10°C temperature is equal to –**
 - (a) 163 K
 - (b) 10 K
 - (c) 183 K
 - (d) 283 K
7. **During evaporation of liquid –**
 - a) The temperature of the liquid falls.
 - b) The temperature of the liquid rises.
 - c) The temperature of the liquid remains unchanged.
 - d) All statements are wrong.
8. **A gas can be best liquefied –**
 - a) By increasing the temperature.
 - b) By lowering the pressure.
 - c) By increasing the pressure and reducing the temperature.
 - d) None of these is correct.
9. **Pressure of air at sea level is –**
 - b) One atmosphere
 - c) 76 cm of Hg
 - d) 760 mm of Hg
 - e) All of these

SECTION – 2

10. **Compound Y has boiling point equal to room temperature. Identify its physical state at room temperature, below & above room temperature.**
11. **What is the difference between a gas and a vapour?**
12. **Why ice at 273K (0°C) is more effective in cooling than water at the same temperature?**
13. **We can easily move our hand in air but do the same in water with greater effort. Give reason.**
14. **What is latent heat of fusion?**
15. **Explain interconversion of states of matter.**
16. **Distinguish between boiling and evaporation.**
17. **What is the purpose of sipping coffee from a saucer instead of sipping from glass or cup?**
18. **Explain the factors affecting the rate of evaporation.**

☆Learn Notes of Chapter 1

PHYSICS

☆NCERT question of chapter motion and laws of motion.

☆Activity based on Newton laws of motion inertia and Newton third law of motion.

Holiday Homework (9th Class)

BIOLOGY

FUNDAMENTAL UNIT OF LIFE

1. Given below are four options against each question. Choose the option which you consider the most appropriate as your answer.
- (i) Which of the cell organelles is involved in membrane biogenesis?
(a) Ribosome (b) Golgi body
(c) Endoplasmic Reticulum (d) Peroxisome
 - (ii) When a plant cell is placed in a hypertonic solution, it undergoes:
(a) No change (b) Deplasmolysis
(c) Plasmolysis (d) Replasmolysis
 - (iii) Amoeba acquires its food through a process, termed: 9
(a) Exocytosis (b) Plasmolysis
(c) Endocytosis (d) a and b both
 - (iv) The cell organelle involved in forming complex sugars from simple sugars are:
(a) Endoplasmic Reticulum (b) Ribosomes
(c) plastids (d) Golgi apparatus
 - (v) Which of the following are covered by a double membrane
(a) Mitochondria (b) Plastid
(c) Vacuole (d) a and b

Answer the following questions.

- 2. What is chromosome?
- 3. Define plasmolysis.
- 4. Why is ATP called energy currency of the cell?
- 5. Which factor determines the shape and size of the cell?
- 6. What is gene?
- 7. What is lacking in a virus which makes it dependent on living cell to multiply?
Give reason.
- 8. Lysosomes are a kind of waste disposal system of a cell. Justify the statement.
- 9. Draw a labeled diagram of a prokaryotic cell.
- 10. Which cell organelle is called power house of the cell? And why?
Long answer type questions:
- 11. Create a ven diagram to compare the structure of plant and animal cell.

Holiday Homework (9th Class)

12. Distinguish between hypotonic solution, isotonic solution and hypertonic solution.
13. With the help of the flow chart list all the cell organelles and write one function of each of them.
14. Define osmosis. Explain the phenomenon with an example. Extended Learning
15. Take two slice of cucumber in two Petri dishes. Sprinkle salt and leave other as such. State your observation pertaining to the differences in the surface of cucumber slices and amount of water released from both in the Petri dishes after 10 minutes
16. Weeds can be killed by sprinkling salt in the soil on which they grow. Which phenomenon produces this effect?
17. What happens to plant when excess chemical fertilizers added.
18. Why does the skin of your finger shrink when you wash clothes for long times?
19. A person takes concentrated solution of salt. After sometime he starts vomiting. What is the phenomenon responsible for such a situation? Explain.
20. We eat food composed of all the nutrients like carbohydrate, proteins, fats, vitamins, minerals and water. After digestion, these are absorbed in the form of glucose, amino acids, fatty acids, glycerol etc. What mechanisms are involved in absorption of digested food and water?

Drawing Holiday Homework

- Make one beautiful decorated folder

Social Science

Task 1

- a) Make a project on Consumer Awareness – “Know Your Rights” (For students having odd roll number)
- b) Make a project on “Disaster Management” (For students having Even roll number)

Task 2

- a) Students can make 3D map of India using Clay, Paper, cardboard or other material showing major physical features. (For students having odd roll number)
- b) Students can make a model using Clay, Paper, cardboard or other material showing different aspects of French revolution. (For students having Even roll number)

Task 3

- a) Students can make a short video (duration 5-10 minutes) on topic “Why Democracy is important”. (For students having odd roll number)
- b) Students can make a short video (duration 5-10 minutes) on topic “Fundamental Rights and Responsibilities”. (For students having Even roll number)

Task 4

Complete the following assignments

Holiday Homework (9th Class)

Assignment of Economics **Chapter – 1** **The Story of the Village Palampur**

1. Which of the following statements is not true about small-scale manufacturing in villages?
(a) Farmers engage in it to supplement their income.
(b) Farmers take help of their family members.
(c) The production is done mostly at home.
(d) Farmers produce articles for their own use.
2. What is the basic constraint in raising farm production?
(a) Capital is scarce. (b) Land is fixed.
(c) Agricultural workers are not willing to work.
(d) Irrigation is not well developed.
3. The standard unit of measuring agricultural land is:
(a) Hectare (b) Bigha (c) Guintha (d) All of these
4. The main reason why farmers are able to grow two or three crops in a year is due to:
(a) Persian wheels
(b) Well-developed system of irrigation
(c) HYV seeds (d) Expansion of land area
5. The cost of cultivation is rising fast due to:
(a) Government policies
(b) Increased use of advanced agricultural inputs
(c) Debt of farmers (d) Increase in land area
6. Entrepreneur is a person who
(a) extends loans to those who need.
(b) puts together land, labour and capital for the production.
(c) is expert in technical aspects of production.
(d) manages the labour aspect of production.
7. 'Bigha' and 'Guintha' are
(a) the type of village house. (b) the type of hybrid seeds.
(c) the measuring units of grain.
(d) the measuring units of land area in village.
8. Finance raised to operate a business is called _____.
(a) labour (b) enterprise (c) land (d) capital
9. The Green Revolution introduced the farmers to cultivation of
(a) wheat and rice (b) green vegetables (c) sugar cane (d) forests

Holiday Homework (9th Class)

10. Multiple Cropping refers to
 - (a) cultivation of wheat and rice.
 - (b) cultivation of two crops in alternate rows.
 - (c) cultivating more than one crop on the same field each year.
 - (d) cultivating crops and rearing animals on the same farm.
11. Working capital stands for
 - (a) tools, machines and buildings.
 - (b) raw materials and money in hand.
 - (c) total share capital.
 - (d) fixed deposits in financial institutions.
12. Which among the following states was first to try out the modern farming methods in India?
 - (a) Haryana
 - (b) Jharkhand
 - (c) Bihar
 - (d) Odisha
13. Farm labour is provided by:
 - (a) Rich farmers
 - (b) Landless farmers
 - (c) Poor People
 - (d) Children
14. Which of the following is not fixed capital?
 - (a) Agricultural land
 - (b) Tubewell
 - (c) Fertilizers and pesticides
 - (d) Farm machinery
15. The non-farming activities that are practiced by farmers include:
 - (a) Dairy farming
 - (b) Small-scale manufacturing and exchange of goods on a small scale
 - (c) Transportation of goods and people
 - (d) All of the above
16. Which is the most important factor of production?
 - (a) Land
 - (b) Labour
 - (c) Human capital
 - (d) Physical capital
17. Which of the following is not a source of irrigation?
 - (a) Canals
 - (b) Tanks and tube wells
 - (c) Ordinary wells and springs
 - (d) Rainfall
18. Which area in India has a low level of irrigation?
 - (a) Deccan plateau
 - (b) Coastal regions
 - (c) Riverine plains
 - (d) Both (a) and (b)
19. Which Kharif crop is used for cattle feed?
 - (a) Sugarcane and wheat
 - (b) Potato and sugarcane
 - (c) Jowar and bajra
 - (d) Wheat and potato
20. The activities such as small manufacturing, transport, shopkeeping are referred to as:
 - (a) Non-economic activities
 - (b) Non-farming activities
 - (c) Non-traditional activities
 - (d) Non-market activities
21. The concept of White Revolution is associated with:
 - (a) food crops
 - (b) milk
 - (c) cotton
 - (d) pesticides

Holiday Homework (9th Class)

22. Consumption of chemical fertilisers is highest in which state of India?
(a) Punjab (b) Haryana (c) Rajasthan (d) Himachal Pardesh
23. People of Palampur sell milk in the nearby large village named:
(a) Raigarh (b) Siliguri (c) Shahpur (d) Raiganj
24. Where do most of the small farmers borrow money to arrange for the capital in Palampur?
(a) Bank (b) Co-operative Societies
(c) Village moneylenders (d) Friends and relatives
25. Which of the following is a modern farming method?
(a) Multiple cropping (b) Use of HYV seeds
(c) Use of manure as fertilizers (d) Both (b) and (c)
26. HYV seeds stands for
(a) Heavy yielding variety seeds (b) High yielding variety seeds
(c) Half yielding variety seeds (d) None of the above
27. Which of the following is fixed capital?
(a) Tools and machines (b) Fertilisers and pesticides
(c) Soil (d) Seeds
28. Which of the following is grown in the rainy season?
(a) Jowar and bajra (b) Wheat (c) Soyabean (d) Rice
29. Which one of the following is not an effect of the modern farming?
(a) Soil degradation (b) Deforestation
(c) Decrease in groundwater (d) Water pollution
30. Which among the following is working capital?
(a) Machine (b) Money (c) Tools (d) Turbine
31. Match the following items in column A with the those in column B and choose the correct answer from the options given below:

Column A	Column B
i. Labour	a) Tools, machines and raw material etc.
ii. Land	b) Most abundant factor of production
iii. Capital	c) Fixed factor of production.

- (a) (i) – b, (ii) – c, (iii) – a (b) (i) – c, (ii) – b, (iii) – d
(c) (i) – c, (ii) – a, (iii) – b (d) (i) – a, (ii) – c, (iii) – b

32. Match the following items in column A with the those in column B and choose the correct answer from the options given below:

Column A	Column B
i. Land, Labour and Human Capital	a) Labour
ii. Skilled and Unskilled human resources	b) Working Capital
iii. Raw material and Money in hand	c) Fixed Capital
iv. Tools, Machines and Buildings	d) Factor of production

Holiday Homework (9th Class)

- (a) (i) – b, (ii) – d, (iii) – a, (iv) – c (b) (i) – c, (ii) – a, (iii) – d, (iv) – b
(c) (i) – d, (ii) – a, (iii) – b, (iv) – c (d) (i) – d, (ii) – a, (iii) – b, (iv) – c
33. Assertion (A): The wages for farm labourers in Palampur are less than minimum wages.
Reason (R): Employment is more and farmers are less in Palampur.
(a) Both A and R are true and R is the correct explanation of A
(b) Both A and R are true but R is not the correct explanation of A
(c) A is true but R is false (d) A is false but R is true
34. Assertion (A): The small farmers borrow money in Palampur.
Reason (R): They need money to buy agricultural inputs.
(a) Both A and R are true and R is the correct explanation of A
(b) Both A and R are true but R is not the correct explanation of A
(c) A is true but R is false (d) A is false but R is true
35. Assertion (A): Green Revolution is associated with the loss of soil fertility.
Reason (R): In Green Revolution, there is increased use of chemical fertilisers.
(a) Both A and R are true and R is the correct explanation of A
(b) Both A and R are true but R is not the correct explanation of A
(c) A is true but R is false (d) A is false but R is true
36. Assertion (A): Farmers in Palampur are able to grow three different crops in a year.
Reason (R): Land area under cultivation is practically fixed.
(a) Both A and R are true and R is the correct explanation of A
(b) Both A and R are true but R is not the correct explanation of A
(c) A is true but R is false (d) A is false but R is true
37. Assertion (A): Land, a natural resource, is subject to degradation.
Reason (R): It is because of the continuous use of groundwater from tubewell.
(a) Both A and R are true and R is the correct explanation of A
(b) Both A and R are true but R is not the correct explanation of A
(c) A is true but R is false (d) A is false but R is true
38. Assertion (A): Raw material is a fixed capital.
Reason (R): Raw material is used up during the production process.
(a) Both A and R are true and R is the correct explanation of A
(b) Both A and R are true but R is not the correct explanation of A
(c) A is true but R is false (d) A is false but R is true
39. Assertion (A): There is a basic constraint in raising farm production.
Reason (R): Land area under cultivation is practically fixed.
(a) Both A and R are true and R is the correct explanation of A
(b) Both A and R are true but R is not the correct explanation of A
(c) A is true but R is false (d) A is false but R is true

Holiday Homework (9th Class)

40. Assertion (A): Farmers in some parts of India are able to grow three different crops in a year.

Reason (R): It is due to well-developed system of irrigation.

- (a) Both A and R are true and R is the correct explanation of A
(b) Both A and R are true but R is not the correct explanation of A
(c) A is true but R is false (d) A is false but R is true

Assignment of Geography

Chapter 1 - India – Size and Location

1. A narrow channel of sea which separates two land masses is known as:
(a) Mound (b) Pass (c) Strait (d) Valley
2. Which country shares land boundaries with India in the west?
(a) China (b) Nepal (c) Bhutan (d) Pakistan
3. Which of the following states shares an international boundary?
(a) Haryana (b) Jharkhand
(c) Uttarakhand (d) Madhya Pradesh
4. Which one of the following water bodies separates Sri Lanka from India?
(a) Palk Strait and Gulf of Khambat
(b) Palk Strait and Gulf of Mannar
(c) Gulf of Mannar and 10° Channel
(d) 10° Channel and Gulf of Khambat
5. Which of the following countries is larger than India in terms of land area?
(a) Russia (b) New Zealand (c) South Africa (d) Great Britain
6. The Tropic of Cancer passes through
(i) Gujarat (ii) Madhya Pradesh
(iii) Jharkhand (iv) West Bengal
(a) (i) and (ii) (b) (iii) and (iv)
(c) (i), (ii), (iii) and (iv) (d) All options are irrelevant
7. How many states and Union Territories does India have?
(a) India has 26 States and 7 Union Territories
(b) India has 25 States and 7 Union Territories
(c) India has 28 States and 8 Union Territories
(d) India has 28 States and 6 Union Territories
8. Both the latitudinal and longitudinal extent of India's mainland is about 30°. But on looking at the map of India which of the following alternatives do you observe about India's size?
(a) East-west extent appears to be smaller than north-south extent.
(b) East-west extent appears to be larger than north-south extent.

Holiday Homework (9th Class)

- (c) East-west and north-south extent appears equal.
(d) North-south extent appears to be smaller than east-west extent.
9. If the local time at Dwarka ($69^{\circ}01'E$) in Gujarat to the west of India is 6 am, what will be the local time at Dibrugarh ($94^{\circ}58'E$ approximately 95°), in Assam, in the east?
(a) 4.16 am (b) 6 am (c) 7.44 am (d) 7.44 pm
10. The Standard Meridian of India, $82^{\circ}30'E$ passes through which of the following places?
(a) Kanniya kumari in Tamil Nadu (b) Walong in Arunachal Pradesh
(c) Kachchh in Gujarat (d) Mirzapur in Uttar Pradesh
11. Which of the following has reduced India's distance from Europe by 7000 km?
(a) Suez Canal (b) Panama Canal
(c) Indira Gandhi Canal (d) Buckingham Canal
12. Which line divides India into approximately two equal parts?
(a) Equator (b) Tropic of Cancer
(c) Tropic of Capricorn (d) None of these
13. What is the position of India in the world in respect of area?
(a) Eighth (b) Seventh (c) Sixth (d) Second
14. The three states which are situated along the Himalayas are:
(a) Himachal Pradesh, Uttarakhand and Arunachal Pradesh
(b) Gujarat, Rajasthan and Haryana
(c) Punjab, Himachal Pradesh and Uttarakhand
(d) Punjab, Haryana and Himachal Pradesh
15. Which country among the India's neighbours is the smallest?
(a) Nepal (b) Bhutan (c) Sri Lanka (d) Bangladesh
16. Due to which of the following reasons is the Indian Ocean named after India?
(a) India has a strategic location along the trans-Indian Ocean routes.
(b) No other country has a long coastline on the Indian Ocean as India.
(c) India is centrally located at the head of the Indian Ocean.
(d) All of the above
17. Which of the following is the oldest route of contact between India and other countries of the world?
(a) Ocean routes (b) Maritime contact (c) Land routes (d) Air routes
18. The latitudinal extent of India influences:
(a) Sunrise and sunset (b) Day and night
(c) Seasons (d) None of these
19. In which hemisphere does India lie?
(a) Southern (b) Northern (c) Western (d) Eastern
20. Which is the smallest state of India in area?
(a) Sikkim (b) Goa (c) Manipur (d) Puducherry

Holiday Homework (9th Class)

21. Which is the largest state of India in area?
(a) Uttar Pradesh (b) Maharashtra (c) Rajasthan (d) Madhya Pradesh
22. Which country is not a neighbor of India?
(a) Afghanistan (b) Pakistan (c) Thailand (d) Myanmar
23. The coastline along the mainland of India is about
(a) 6100 km (b) 7510 km (c) 7100 km (d) 6510 km
24. Which of the following is not a Union Territory of India?
(a) Puducherry (b) Manipur
(c) Daman & Diu & Dadra & Nagar Haveli (d) Lakshadweep
25. Which country has the longest coastline along the Indian Ocean?
(a) Madagascar (b) Malaysia (c) India (d) Sri Lanka
26. Which country has the highest geographical area?
(a) Canada (b) Russia (c) USA (d) China
27. The Standard Meridian of India passes near which place?
(a) Gangtok in Sikkim (b) Prayagraj (Allahabad) in U.P.
(c) Varansi in U.P. (d) Mirzapur in U.P.
28. What is the longitudinal and latitudinal extension of India?
(a) $68^{\circ}7'E$ to $97^{\circ}25'E$ and $8^{\circ}5'N$ to $37^{\circ}6'N$
(b) $8^{\circ}4'E$ to $68^{\circ}7'E$ and $97^{\circ}25'N$ to $37^{\circ}6'N$
(c) $68^{\circ}7'E$ to $97^{\circ}25'E$ and $8^{\circ}4'N$ to $37^{\circ}6'N$
(d) $68^{\circ}8'E$ to $97^{\circ}26'E$ and $8^{\circ}5'N$ to $38^{\circ}6'N$
29. Which of the following are two seas of India?
(i) Bay of Bengal (ii) Arabian Sea
(iii) Gulf of Mannar (iv) Chilika Sea
(a) Only i and ii (b) Only ii and iv (c) Only iii and iv (d) Only i and iii
30. Which latitude has been taken as the Standard Meridian of India?
(a) $82^{\circ} 30' E$ (b) $82^{\circ} 40' E$ (c) $82^{\circ} 50' E$ (d) $82^{\circ} 55' E$

31. Match the Columns.

Column A	Column B
A. Gujarat	i. Ranchi
B. Chhattisgarh	ii. Raipur
C. Meghalaya	iii. Shilling
D. Jharkhand	iv. Gandhi Nagar

- (a) A-(ii), B-(iii), C-(iv), D-(i) (b) A-(iii), B-(iv), C-(ii), D-(i)
(c) A-(iv), B-(ii), C-(iii), D-(i) (d) A-(i), B-(iii), C-(iv), D-(ii)
32. Match the following items in column A with the those in column B and choose the correct answer from the options given below:

Holiday Homework (9th Class)

Column (A)	Column (B)
i. Land boundary of India	a) 7516.6 km
ii. Total length of the coastline	b) 2933 km
iii. West to East extension	c) 3214 km
iv. North to South extension	d) 15,200 km

(a) (i) – c, (ii) – b, (iii) – a, (iv) – d

(b) (i) – d, (ii) – a, (iii) – b, (iv) – c

(c) (i) – b, (ii) – d, (iii) – a, (iv) – c

(d) (i) – c, (ii) – a, (iii) – b, (iv) – d

33. Match the following items in column A with the those in column B and choose the correct answer from the options given below:

Column (A)	Column (B)
i. Latitude of India	a) 23½°N
ii. Longitude of India	b) 82½°E
iii. Tropic of Cancer	c) 8°4'N and 37°6'N
iv. Standard Meridian of India	d) 68°7'E and 97°25'E

(a) (i) – c, (ii) – d, (iii) – a, (iv) – b

(b) (i) – b, (ii) – a, (iii) – c, (iv) – d

(c) (i) – b, (ii) – c, (iii) – d, (iv) – a

(d) (i) – d, (ii) – b, (iii) – a, (iv) – c

34. Assertion (A): The various passes across the mountains in the north have provided passages to the ancient travelers.

Reason (R): The spices, muslin and other merchandise were taken from India to different countries.

(a) Both A and R are true and R is the correct explanation of A

(b) Both A and R are true but R is not the correct explanation of A

(c) A is true but R is false

(d) A is false but R is true

35. Assertion (A): The landmass of India has an area of 3.28 million square km.

Reason (R): The Indian land mass has a central location between the East and West Asia.

(a) Both A and R are true and R is the correct explanation of A

(b) Both A and R are true but R is not the correct explanation of A

(c) A is true but R is false

(d) A is false but R is true

36. Assertion (A): The trans-Indian Ocean routes provide a strategic central location to India.

Reason (R): This route connects the countries of Europe in the West and the countries of East Asia.

(a) Both A and R are true and R is the correct explanation of A

(b) Both A and R are true but R is not the correct explanation of A

(c) A is true but R is false

(d) A is false but R is true

37. Assertion (A): India has achieved multifaceted socio-economic progress during the last five decades.

Reason (R): India has contributed significantly to the making of world history.

(a) Both A and R are true and R is the correct explanation of A

(b) Both A and R are true but R is not the correct explanation of A

Holiday Homework (9th Class)

- (c) A is true but R is false (d) A is false but R is true
38. Assertion (A): India's contacts with the world have continued through ages but her relationships through the land routes are much older than her maritime contacts.
Reason (R): India does not occupy an important strategic position in South Asia.
(a) Both A and R are true and R is the correct explanation of A
(b) Both A and R are true but R is not the correct explanation of A
(c) A is true but R is false (d) A is false but R is true
39. Assertion (A): The latitudinal extent influences the duration of day and night.
Reason (R): 82°30'E has been selected as the standard meridian of India
(a) Both A and R are true and R is the correct explanation of A
(b) Both A and R are true but R is not the correct explanation of A
(c) A is true but R is false (d) A is false but R is true
40. Assertion (A): India is the seventh largest country of the world.
Reason (R): India's total area accounts for about 2.4% of the total geographical area of the world.
(a) Both A and R are true and R is the correct explanation of A
(b) Both A and R are true but R is not the correct explanation of A
(c) A is true but R is false (d) A is false but R is true

Assignment of Political Science

Chapter -1

What is Democracy? Why Democracy

1. Which of the following countries is not a democracy?
(a) Great Britain (b) Canada (c) Myanmar (d) India
2. He overthrew a democratically elected government and declared himself the 'Chief Executive' of the country. Later he changed his designation to President and in 2002. Which President of Pakistan was this?
(a) General Pervez Musharraf (b) Muhammad Zia-ul-Ha
(c) Farooq Leghari (d) Muhammad Mian Soomro
3. Who passed the 'Legal Framework Order'?
(a) ZANU (b) Robert Mugabe
(c) General Musharraf (d) None of these
4. PRI stands for
(a) People's Revolutionary Institution
(b) People of Independent Revolution
(c) People's Rescue Institution
(d) Institutional Revolutionary Party

Holiday Homework (9th Class)

5. Since 1930, which country holds elections after every six years and which has never been under a military or dictator's rule?
(a) Nepal (b) Mexico (c) Ghana (d) Zimbabwe
6. Which party always won elections in Mexico since its independence in 1930 until 2000?
(a) Revolutionary Party (b) Mexican Revolutionary Party
(c) Institutional Revolutionary Party (d) Institutional Party
7. When did Zimbabwe attain independence and from whom?
(a) 1970, from Black minority rule (b) 1880, from White minority rule
(c) 1980, from Americans (d) 1980, from White minority rule
8. How were the rulers of Myanmar elected?
(a) Dictatorship (b) By the people
(c) Those who happened to be in control of the army became the rulers
(d) Monarchy
9. _____ is a form of government in which the rulers are elected by the people.
(a) Dictatorship (b) Monarchy (c) Democracy (d) Communism
10. How are the rulers of Saudi Arabia elected?
(a) By the people (b) Rule of the army
(c) Those who happen to be born into the royal family
(d) None of the above
11. Which of these features is/are necessary to provide the basic rights to the citizens?
(a) Citizens should be free to think
(b) should be free to form associations
(c) Should be free to raise protest (d) All the above
12. The drawbacks of democracy is
(a) instability and delays (b) corruption and hypocrisy
(c) politicians fighting among themselves (d) All of the above
13. Which officials must be elected for any government to be called a democracy?
(a) Certain people from different constituencies passing the criteria to be elected
(b) Any adult of the country (c) Only bureaucratic
(d) Heads of different organizations
14. What requirements do the people of the state need after elections?
(a) Every office bearer has certain rights and responsibilities assigned by the constitution and the law.
(b) To respect some guarantees to the minorities.
(c) Each of these is accountable not only to the people but also to other independent officials.
(d) All of the above

Holiday Homework (9th Class)

15. Which of the following is not true regarding China's election?
- (a) Elections are regularly held after every five years.
 - (b) Before contesting elections, a candidate needs the approval of the Chinese Communist Party.
 - (c) The government is always formed by the Communist Party.
 - (d) Every party has fair chance to come into power.
16. In which of the following countries Russian minority finds it difficult to get the right to vote?
- (a) Saudi Arabia (b) Pakistan (c) India (d) Estonia
17. In which of the following country the vote of an indigenous Fiji has more value than that of an Indian?
- (a) Saudi Arabia (b) Fiji (c) Estonia (d) Iran
18. Which of the following is TRUE as regards democracy in Pakistan?
- (i) People elect their representatives to the national and provincial assemblies.
 - (ii) Elected representatives don't have the power to take the final decisions.
- (a) Only (i) (b) Only (ii) (c) Both i and ii (d) Neither i Nor ii
19. Democracy is based on a fundamental principle of political equality. Which means:
- (a) Each adult citizen must have one vote and each vote must have one value.
 - (b) Free and fair election.
 - (c) Women should not be given right to vote.
 - (d) Final decision-making power must rest with the people.
20. Which of the given is not a feature of democratic government?
- (a) Democracy is a form of government in which the rulers are elected by the people.
 - (b) In a democracy the final decision making power rest with those elected by the people.
 - (c) A democracy must be based on a free and fair election where those currently in power have a fair chance of losing.
 - (d) Use of money and muscle power during the election.
21. Why is a democratic government a better government?
- (a) It is more accountable.
 - (b) It improves the quality of decision making.
 - (c) It deals with differences and conflicts.
 - (d) All of the above.
22. Which of the following is undemocratic?
- (a) Ruling party has lost in the last election.
 - (b) There is an independent election commission.
 - (c) All the people have to follow the state religion.
 - (d) It is an accountable government.

Holiday Homework (9th Class)

23. Which of the following is a democratic statement?
- (a) The big political parties use money and muscle power during election.
(b) Women do not have the right to vote.
(c) The final decision making power rests, with people's representatives.
(d) Candidates need approval from the largest party to contest the elections.
24. In China, elections are regularly held after years for electing the country's parliament called Quanguo Renmin Daibiao
- (a) 3 (b) 5 (c) 6 (d) 2
25. Since its independence in 1930 Mexico holds elections after every _____ years to elect its President.
- (a) 6 (b) 5 (c) 3 (d) 2
26. Which of the following is TRUE as regards the elections in Mexico?
- (i) The elections have always been free and fair.
(ii) Until 2000, every election, had been won by one party called PRI.
- (a) Only (i) (b) Only (ii)
(c) Both (i) and (ii) (d) Neither (i) Nor (ii)
27. In which country Until 2015, men had the right to vote. women did not:
- (a) Mexico (b) Russia (c) China (d) Saudi Arabia
28. The National People's Congress has the power to appoint the President of _____.
- (a) Mexico (b) Pakistan (c) China (d) India
29. Since its independence from white minority rule in 1980 Zimbabwe has been ruled by the party and its leader
- (a) ZANU-PF, General Pervez Musharraf
(b) ZANU-PF, Robert Mugabe
(c) People's party, Robert Mugabe
(d) Communist Party, General Pervez Musharraf
30. President Robert Mugabe was forced out of office in 2017.
- (a) Mexico (b) Pakistan (c) Zimbabwe (d) Fiji
31. _____ government blocked free flow of information by placing restrictions on popular websites like 'Google' and 'Yahoo'.
- (a) Chinese (b) Fiji (c) Mexican (d) Zimbabwe
32. Match the Columns.

Column A	Column B
1. ZANU-PF	a) Mexico
2. Communist Party	b) Zimbabwe
3. PRI	c) China

(a) 1-c, 2-a, 3-b

(b) 1-a, 2-c, 3-b

(c) 1-b, 2-c, 3-a

(d) 1-a, 2-b, 3-c

Holiday Homework (9th Class)

33. Read these five examples of working or denial of democracy. Match each of these with the relevant feature of democracy discussed above.

Example (A)	Feature (B)
i. The king of Bhutan has declared that in future he will be guided by the advice given to him by elected representatives.	a) Rule of law.
ii. Many Tamil workers who migrated from India were not given a right to vote in Sri Lanka.	b) Respect for rights.
iii. The king of Nepal imposed a ban on political gatherings, demonstrations and rallies.	c) One person, one vote, one value.
iv. The Indian Supreme Court held that the dissolution of the Bihar assembly was unconstitutional.	d) Free and fair electoral competition.
v. Political parties in Bangladesh have agreed that a neutral government should rule the country at the time of elections.	e) Major decisions by elected leaders.

(a) i – c, ii – e, iii – d, iv – a, v – b

(b) i – e, ii – c, iii – b, iv – a, v – d

(c) i – b, ii – d, iii – a, iv – e, v – c

(d) i – d, ii – e, iii – a, iv – c, v – b

34. Match the columns:

Column A	Column B
1. Pakistan	a) More weightage to indigenous voters.
2. China	b) Military rulers who got 5 years extension as President through referendum.
3. Mexico	c) Women do not have right to vote.
4. Saudi Arabia	d) Law that limits the right to criticize the President.
5. Zimbabwe	e) School teachers are forced to influence parents to vote for a certain political party.
6. India	f) Largest democracy in the world.
7. Fiji	g) National People's Congress

(a) 1-f, 2-a, 3-e, 4-g, 5-b, 6-d, 7-c

(b) 1-e, 2-f, 3-g, 4-d, 5-c, 6-a, 7-b

(c) 1-b, 2-g, 3-a, 4-c, 5-d, 6-f, 7-e

(d) 1-b, 2-d, 3-e, 4-f, 5-c, 6-g, 7-a

35. Assertion (A): Myanmar is considered a democratic government.

Reason (R): The army rulers of Myanmar are not elected by people.

(a) Both A and R are true and R is the correct explanation of A

(b) Both A and R are true but R is not the correct explanation of A

(c) A is true but R is false

(d) A is false but R is true

36. Assertion (A): A minority is allowed to take decisions on behalf of all the people.

Reason (R): The majority of people rule through their elected representatives.

(a) Both A and R are true and R is the correct explanation of A

(b) Both A and R are true but R is not the correct explanation of A

(c) A is true but R is false

(d) A is false but R is true

Holiday Homework (9th Class)

37. Assertion (A): Representative government consider the most common form of democracy.
Reason (R): People in democracy can sit together and take decisions collectively.
(a) Both A and R are true and R is the correct explanation of A
(b) Both A and R are true but R is not the correct explanation of A
(c) A is true but R is false (d) A is false but R is true
38. Assertion (A): Democracy enhances the dignity of citizens.
Reason (R): Democracy is based on the principle of political equality.
(a) Both A and R are true and R is the correct explanation of A
(b) Both A and R are true but R is not the correct explanation of A
(c) A is true but R is false (d) A is false but R is true
39. Assertion (A): Every democracy has to try to realise the ideals of a democratic decision making.
Reason (R): Every country is a perfect democracy.
(a) Both A and R are true and R is the correct explanation of A
(b) Both A and R are true but R is not the correct explanation of A
(c) A is true but R is false (d) A is false but R is true
40. Assertion (A): Elections in India are democratic.
Reason (R): People have to choose the ruling party and the candidates approved by it.
(a) Both A and R are true and R is the correct explanation of A
(b) Both A and R are true but R is not the correct explanation of A
(c) A is true but R is false (d) A is false but R is true

Assignment of History **Chapter -1 The French Revolution**

1. Which of the following theories was proposed by Montesquieu?
(a) Social Contract Theory (b) Theory of Division of Powers
(c) Theory of Popular Sovereignty (d) Theory of Democracy
2. The Bastille was hated by all in France because:
(a) it stood for the despotic power of the King.
(b) it was a fortress prison.
(c) its commander tortured the inmates.
(d) it housed some dreaded criminals.
3. The greatest achievement of the National Assembly convened in France in 1789 was:
(a) issuing of Declaration of Rights.
(b) passing of laws checking the power of the monarch.

Holiday Homework (9th Class)

- (c) establishment of a new judiciary.
(d) establishment of a new legislature.
4. Why was the subsistence crisis caused in France?
(a) The wages of the people were low.
(b) There was widespread unemployment.
(c) Increase in population led to rapid increase in the demand of food grains.
(d) The government imposed various taxes.
5. Which of the following decisions was taken by the Convention?
(a) Declared France a constitutional monarchy
(b) Abolished the monarchy
(c) All men and women above 21 years got the right to vote
(d) Declared France a Republic
6. In the meeting of the Estates General, the members of the Third Estate demanded that
(a) all the three Estates should have one vote altogether.
(b) each Estate should have one vote.
(c) each member of the three Estates should have one vote.
(d) none of the above
7. Which of these provisions were passed by the Assembly on the night of 4 August, 1789?
(a) Abolition of feudal system of obligations
(b) Clergy had to give up its privileges
(c) Tithes were abolished
(d) All the above
8. A guillotine was _____.
(a) a device consisting of two poles and a blade with which a person was beheaded
(b) a fine sword with which heads were cut off
(c) a special noose to hang people
(d) none of the above
9. Who said: The task of representing the people has been given to the rich?
(a) Mirabeau
(b) Jean-Paul Marat
(c) Rousseau
(d) Georges Denton
10. Who wrote an influential pamphlet What is the third Estate?
(a) Mirabeau
(b) Abbé Sieyès
(c) Jean-Paul Marat
(d) Olympe de Gouges
11. Upon becoming free, the slave wore _____.
(a) blue cap
(b) white cap
(c) red cap
(d) green cap
12. Louis XVI was sentenced to death on the charges of _____.
(a) misuse of powers
(b) cruelty
(c) treason
(d) incapability
13. Which one of the following group was not benefitted by the French Revolution?
(a) Peasants
(b) Workers
(c) Nobels
(d) Agricultural Labourers

Holiday Homework (9th Class)

14. What did the red cap worn by Sans Culottes in France symbolize?
(a) Brotherhood (b) Danger (c) Anger (d) Liberty
15. Austrian Princess Marie Antoniette was the Queen of which of the following French rulers?
(a) Louis XIII (b) Louis XIV (c) Louis XV (d) Louis XVI
16. Who among the following proposed the Social Contract Theory?
(a) Locke (b) Rousseau (c) Montesquieu (d) Thomas Paine
17. What was the 'Subsistence Crisis' which occurred frequently in France?
a) An extreme situation endangering the basic means of livelihood
b) Subsidy in food grains
c) Large-scale production of food grains
d) None of the above
18. Under the Robespierre's government, the use of more expensive white flour was forbidden; all citizens were required to:
(a) fast twice a week. (b) eat fruits.
(c) eat the pain d'égalité. (d) donate food.
19. Identify the statement which is wrong with reference to Robespierre.
(a) He banned the use of white flour. (b) He rationed meat and bread.
(c) He exempted his party men from punishment.
(d) He converted churches into barracks or offices.
20. The National Assembly framed a Constitution in 1791 to limit the powers of the _____.
(a) Monarch (b) Wealthy man (c) Businessmen (d) Press
21. According to the new constitution of 1791, the National Assembly was to be:
(a) elected directly (b) appointed by the king
(c) elected indirectly (d) a hereditary body
22. Which of these rights were not established as 'natural and inalienable' rights by the constitution of 1791?
(a) Right to life (b) Freedom of speech and opinion
(c) Equality before the law (d) All the above
23. Which group of people did not join the Jacobin club?
(a) Artisans (b) Shopkeepers
(c) Daily-wage workers (d) Men with property
24. Which of the following events took place as a result of the revolt of Jacobins in 1792?
(a) Massacre of the king's guards
(b) Storming of the Palace of the Tuileries
(c) King was held in hostage for several hours. (d) All of the above

Holiday Homework (9th Class)

25. French women demanded the right
(a) to vote (b) to be elected to the assembly
(c) to hold political office (d) All of the above
26. A triangular slave trade took place between Europe, the America and _____.
(a) Africa (b) Asia (c) Australia (d) None of these
27. Who were not considered 'passive citizens'?
(a) Women (b) Children
(c) Non-propertied men (d) Wealthy people
28. The period from 1793 to 1794 is referred to as the Reign of Terror because:
(a) there was loot and plunder all around France.
(b) Robespierre followed a policy of severe control and punishment.
(c) hereditary monarchy was established in France.
(d) successors of Louis XVI became a tyrant.
29. Who among the following reintroduced slavery in France after being abolished in the Jacobin regime?
(a) Louis XIV (b) Napoleon (c) Marat (d) Robespierre
30. Who among the following seized the power in France after the fall of the Jacobin government?
(a) Wealthy middle class (b) Descendants of Louis XVI
(c) Robespierre's son (d) Common people
31. Napoleon Bonaparte was finally defeated in the battle of:
(a) Versailles in 1815 (b) Bordeaux in 1815
(c) Waterloo in 1815 (d) Nantes in 1815
32. Match the Columns.

Column A	Column B
A. Estate belong to a king or nobleman	i. Tithe
B. An estate consisting of the Lord's land and his manor	ii. Taille
C. A tax directly paid to the state	iii. Chateau
D. A tax levied by Church equal to 1/10 th of the agricultural products	iv. Manor

- (a) A-(ii), B-(iii), C-(iv), D-(i) (b) A-(iii), B-(iv), C-(ii), D-(i)
(c) A-(iv), B-(ii), C-(iii), D-(i) (d) A-(i), B-(iii), C-(iv), D-(ii)

33. Match the Columns.

Column A	Column B
1. Estates General	a) Written by Rousseau
2. 'The Social Contract'	b) Legislature of France
3. Jacobin Club	c) Political club which has less prosperous members of society as its members

- (a) 1-c, 2-a, 3-b (b) 1-a, 2-c, 3-b
(c) 1-b, 2-a, 3-c (d) 1-a, 2-b, 3-c

Holiday Homework (9th Class)

34. Match the following items in column A with the those in column B and choose the correct answer from the options given below:

(A)	(B)
i. Louis XVI ascended the throne of France	a) 1789
ii. Storming of Bastille	b) 1815
iii. Napoleon was defeated at Waterloo.	c) 1774

- (a) (i) – c, (ii) – b, (iii) – a
(b) (i) – b, (ii) – a, (iii) – c
(c) (i) – b, (ii) – c, (iii) – a
(d) (i) – c, (ii) – a, (iii) – b

35. Match the following items in column A with the those in column B and choose the correct answer from the options given below:

(A)	(B)
i. Napoleon crowned	a) 1793
ii. Execution of Louis XVI	b) 1791
iii. National Assembly completed the drafting of the Constitution.	c) 1804

- (a) (i) – c, (ii) – b, (iii) – a
(b) (i) – b, (ii) – a, (iii) – c
(c) (i) – b, (ii) – c, (iii) – a
(d) (i) – c, (ii) – a, (iii) – b

36. Assertion (A): The Political instability of the directory paved the way for the rise of a military dictator.

Reason (R): Directory was an executive made up of ten members.

- (a) Both A and R are true and R is the correct explanation of A
(b) Both A and R are true but R is not the correct explanation of A
(c) A is true but R is false
(d) A is false but R is true

37. Assertion (A): Majority of men and women in the eighteenth century could not read or write.

Reason (R): Symbols and images were frequently used instead of printed words to communicate important ideas.

- (a) Both A and R are true and R is the correct explanation of A
(b) Both A and R are true but R is not the correct explanation of A
(c) A is true but R is false
(d) A is false but R is true

38. Assertion (A): In France of the Old Regime the clergy did not have the power to impose taxes according to their will alone.

Reason (R): A meeting of the Third Estate was supposed to be called which would then pass proposals for new taxes.

- (a) Both A and R are true and R is the correct explanation of A
(b) Both A and R are true but R is not the correct explanation of A
(c) A is true but R is false
(d) A is false but R is true

39. Assertion (A): Upon his accession Louis XVI found an empty treasure.

Reason (R): Long years of famine had drained the financial resources.

- (a) Both A and R are true and R is the correct explanation of A

Holiday Homework (9th Class)

- (b) Both A and R are true but R is not the correct explanation of A
(c) A is true but R is false (d) A is false but R is true
40. Assertion (A): The members of the first two Estates enjoyed certain privileges by birth.
Reason (R): They were respected by the society.
- (a) Both A and R are true and R is the correct explanation of A
(b) Both A and R are true but R is not the correct explanation of A
(c) A is true but R is false (d) A is false but R is true

Assignments Made by Kapil Batra (PGT- Economics)

ARTIFICIAL INTELLIGENCE HOLIDAY HOMEWORK

(Do ques/Ans, objective in classwork notebook and art integrated work on A4 sheets)

AI and Fun

Play/Observe the given AI Games/Experiments to learn and understand how AI works.

- a) <https://research.google.com/semantris/>
- b) <https://experiments.withgoogle.com/quick-draw>
- c) <https://semiconductor.withgoogle.com/>
- d) <https://www.scroobly.com/>
- e) <https://emojiscavengerhunt.withgoogle.com/>
- f) <https://experiments.withgoogle.com/bird-sounds>
- g) <https://code.org/oceans>

Activity 1 Scan the QR codes and solve the MCQs



Holiday Homework (9th Class)



Activity 2: DREAM SMART HOME IDEA

You must be knowing what a smart home means. Well, it is a home with smart devices using a specialized technology called IoT (Internet of Things). A smart device (called a thing in this context) is an electronic device that can connect, share and interact with its user and other smart devices and IoT is a technology that forms a network of smart devices (things).

Let us play a game where you will design a dream smart home for you. Make groups of 4 students and discuss what should be your answer for the below given questions.

- (i) List the most important things, which you need to connect with these devices.

(You may refer to: https://www.youtube.com/watch?v=jyMC_HAlzpg@0.33seconds)

- (ii) Now think of the functionality you would want for your home. (list them)

(You may refer to the following videos to check for various technologies and functionalities available today:

<https://www.youtube.com/watch?v=9u9kqhHC6Ok>

https://www.youtube.com/watch?v=F-mEA5RN_yo)

- (iii) Pick the devices you want for your dream smart home.

- (iv) Pick the appropriate position for these in your dream smart home.

- (v) Draw a layout of your dream smart home with all your selected devices.

Activity 3: How do you think Artificial Intelligence can help you as you go about your daily life? Write them on the sheet.

Activity 4: Write a letter/ an email to future self in the word file and save it as pdf.

1. Imagine your future in the next 10 years (related to AI).
2. Type a letter or an email to your future self about what you want to see in the future or what you want to remind to your future.

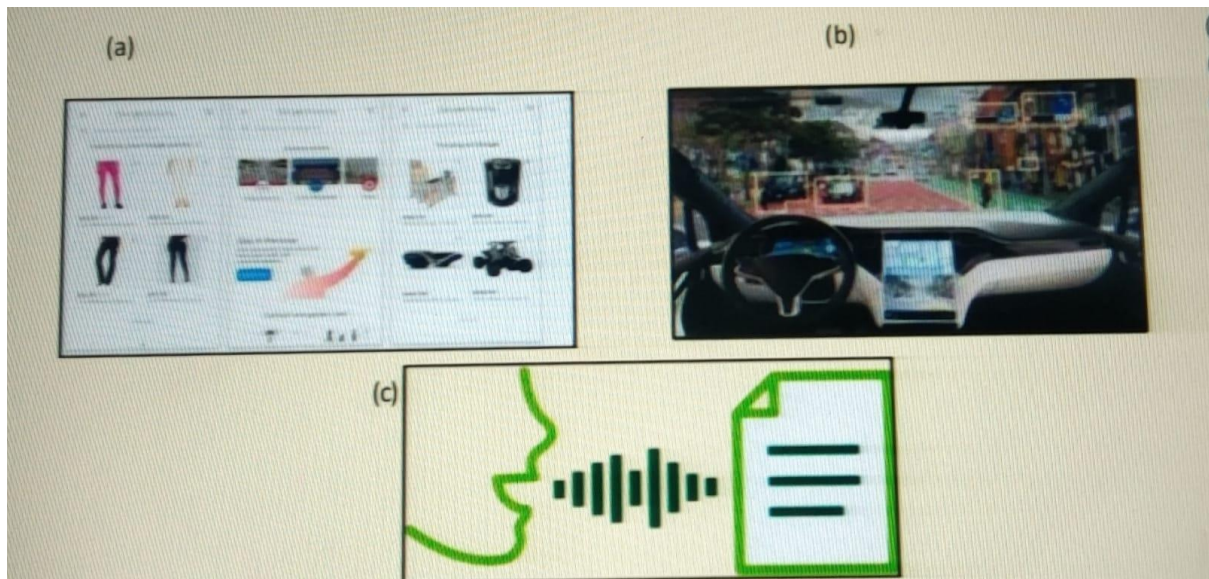
Holiday Homework (9th Class)

3. The following points can be included in letter/email:
 - a. Start with your interests, hobbies, and skills.
 - b. Relate how AI can help you
 - c. Write about your career you want to pursue and how AI will make an impact on that.
4. Save the letter/ email in PDF format.

Question Answer

1. What are the various stages of AI Project Cycle? Can you explain each with an example?
2. How is an AI project different from an IT project?
3. Explain the 4Ws problem canvas in problem scoping.
4. Why is there a need to use a Problem Statement Template during problem scoping?
5. What is Problem Scoping? What are the steps of Problem Scoping?
6. Who are the stakeholders in the problem scoping stage?
7. How can AI be used as a tool to transform the world into a better place?
8. Can you list down a few applications in your smartphone that widely make use of computer vision?
9. Draw out the difference between the three domains of AI with respect to the types of data they use.
10. Identify the features and the domain of AI used in them:

Holiday Homework (9th Class)



11. Separate the following areas based on the kinds of domains widely used in them:
- | | |
|---------------------------------------|---------------------------------|
| a. Crop productivity | b. Traffic regulation |
| c. Maps and navigation | d. Text editors and autocorrect |
| e. Identifying and predicting disease | |
12. Quiz Time: AI Quiz
- Which one of the following is the second stage of AI project cycle?

a. Data Exploration	b. Data Acquisition
c. Modelling	d. Problem Scoping
 - Which of the following comes under Problem Scoping?

a. System Mapping	b. 4Ws Canvas
c. Data Features	d. Web scraping
 - Which of the following is not valid for Data Acquisition?

a. Web scraping	b. Surveys
c. Sensors	d. Announcements
 - If an arrow goes from X to Y with a – (minus) sign, it means that

a. If X increases, Y decreases
b. The direction of relation is opposite
c. If X increases, Y increases
d. It is a bi-directional relationship
 - Which of the following is not a part of the 4Ws Problem Canvas?

a. Who?	b. Why?
c. What?	d. Which?

Holiday Homework (9th Class)

6. Which one of the following is an application of AI?
 - a. Remote controlled Drone
 - b. Self-Driving Car
 - c. Self-Service Kiosk
 - d. Self-Watering Plant System
7. This language is easy to learn and is one of the most popular languages for AI today:
 - a. C++
 - b. Python
 - c. Ruby
 - d. Java
8. This field is enabling computers to identify and process images as humans do:
 - a) Face Recognition
 - b) Model-view-controller
 - c) Computer Vision
 - d) Eye-in-Hand System
9. What does NLP stand for in AI?
 - a. Neutral Learning Projection
 - b. Neuro-Linguistic Programming
 - c. Natural Language Processing
 - d. Neural Logic Presentation
10. Which of the following is not a domain of artificial intelligence?
 - a. Data Management System
 - b. Computer Vision
 - c. Natural Language Processing
 - d. Data Science
11. How excited are you about this AI curriculum?
 - a. Very Excited!
 - b. A bit excited
 - c. Same as always
 - d. Not excited at all

Fill up/One word

1. The guiding principles to decide what is good or bad is known as _____.
2. When building AI solutions, we need to ensure that they follow _____.
3. Praneet hastaken extra packets of mouth freshener after dinner from a restaurant. Is it considered as theft?" Is it -Moral or Ethical concern?
4. Rakshit and Aman are talking about purchasing a new mobile. They discuss various features which they want in their mobile. Aman finds that, he started getting notification of various models of Mobiles that meets his requirement? Write which ethical concern the above example depicts.
5. "Preference for one over the other" is known as _____.

Holiday Homework (9th Class)

6. Artificial Intelligence and machine learning systems can display unfair behaviour if not trained properly. (True/False)
7. Search for images of personal secretary on Google, displaying predominantly the images of Women is an example of _____.
8. An Ethical AI framework makes sure that transparency, fairness and accountability is develop into the systems to provide unbiased results. (True/False)

KAPIL BATRA (PGT ECONOMICS)